

MONTHLY MEMBERSHIP PROGRESS REPORT

District 3231A2

Results as of: 11/30/2023

GMT:

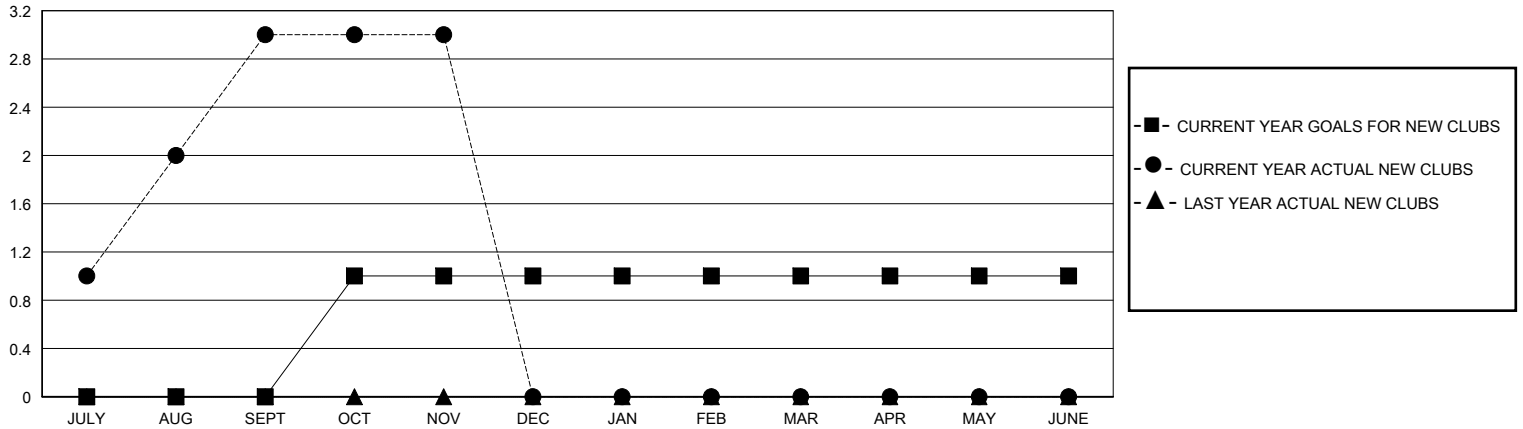
LOCATION INDIA

GMT CA

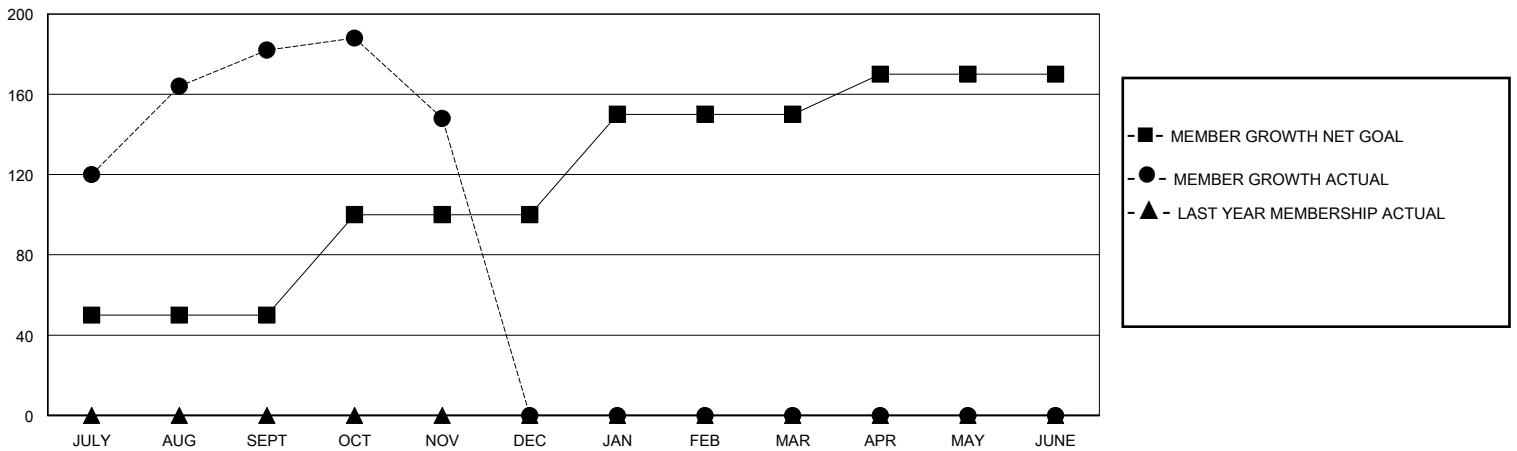
Clubs			
RESULTS FOR 2023-2024			
QUARTER	NEW CLUB GOAL	NEW CLUBS	DROPPED CLUBS
JULY/AUG/SEPT	0	3	2
OCT/NOV/DEC	1	0	0
JAN/FEB/MAR	0	0	0
APR/MAY/JUNE	0	0	0

Members			
RESULTS FOR 2023-2024			
QUARTER	MEMBER GROWTH NET GOAL	MEMBER GROWTH ACTUAL	DROPPED MEMBERS ACTUAL (including transfers)
JULY/AUG/SEPT	50	281	87
OCT/NOV/DEC	50	38	71
JAN/FEB/MAR	50	0	0
APR/MAY/JUNE	20	0	0

GOALS AND ACTUAL NEW CLUBS CUMULATIVE



GOALS AND ACTUAL MEMBERS CUMULATIVE



DROPPED CLUBS: 2	44 CLUBS OF 66 ADDED 1 OR MORE NEW MEMBERS	GENDER DISTRIBUTION MALE 1,502 (60.54%) FEMALE 979 (39.46%)
DROPPED MEMBERS DECEASED 3 CLUB CANCELLED 6 OTHER 149 TOTAL 158	CLICK HERE FOR CUMULATIVE MEMBERSHIP DATA	TOTAL FAMILY UNIT MEMBERS 1,330 FAMILY MEMBERS PAYING HALF DUES 707